

11 June 2019

To: The Leader and Deputy Leader; Cllrs; Roger Hunneman; Jon Gage, Jeff Beck; Nigel Foot; Chris Foster David Marsh; Sarah Slack; Martha Vickers (CS Committee Members) and remaining Council Members

Dear Councillors,

You are required to attend a meeting of the Victoria Park Sub Committee to be held in the Council Chamber, Town Hall, Market Place, Newbury, on **12th August 2019 at 7.30 pm.**

Yours sincerely,

David Ingram
Community Services Manager

AGENDA

1. Apologies for absence

Chairperson

2. Declarations of interest and dispensations

Chairperson

To receive any declarations of interest relating to business to be conducted in this meeting and confirmation of any relevant dispensations.

3. Minutes (Appendix 1)

Chairperson

To approve the minutes of a meeting of the Victoria Park sub Committee held on Monday 8th July 2019 (previously circulated).

4. Questions and Petitions from members of the public

Chairperson

Town Hall, Market Place, Newbury, RG14 5AA

☎ (01635) 35486

☎ (01635) 40484

🐦 @NewburyTC

✉ townCouncil@newbury.gov.uk

🌐 www.newbury.gov.uk

📘 NewburyTC

Newbury Town Council is committed
to continuing to make Newbury a
better place to live, work and visit

5. Members' questions and petitions

Chairperson

6. Blue Plaque for Lottie Dod (Appendix 2)

Community Services Manager

To approve the Blue Plaque celebrating the sporting achievements of Lottie Dod should be incorporated in the Café Building

7. Friends of Victoria Park (Appendix 3)

Community Services Manager

To recommend the funding of materials to support the Friends Group carrying out works to improve the Rose beds in Victoria Park to a sum not exceeding £250

8. Sensory Garden (Appendix 4)

Community Services Manager

To approve the inclusion of a new Sensory Garden within the overall plan for the new Café facility in Victoria Park.

9. Queen Victoria & the Lions (Appendix 5)

Community Services Manager

To consider the options for restoration of the Queen Victoria Statue & associated Lions.

10. Exclusion of the Public

Chairperson

To move: That under Section 1, Paragraph 2 of The Public Bodies (Admission to Meetings) Act 1960 the press and public be excluded from the meeting for the following items of business (agenda item 6) because publicity would be prejudicial to the public interest by reason of the confidential commercial & financial nature of the business to be transacted.

11. Community Services Managers Report on Café design (Appendix 6)

Community Services Manager

To consider an update from the Community Services Manager.

12. Date of next meeting

Chairperson

To agree the suggested date is FRIDAY 6th September 2019.

**MINUTES OF A MEETING OF THE Victoria Park sub Committee of the COMMUNITY SERVICES COMMITTEE HELD IN THE COUNCIL CHAMBER, TOWN HALL, MARKET PLACE, NEWBURY
ON MONDAY 8th July 2019 AT 7.30PM**

PRESENT

Councillors Jeff Beck; Martin Colston; Billy Drummond; Nigel Foot; Jon Gage, Sarah Slack,

In Attendance

David Ingram, Community Services Manager

1. ELECTION OF CHAIRPERSON AND VICE-CHAIRPERSON

Leader of the Council, Councillor Martin Colston, presided over the election of the Chairperson.

PROPOSED: Cllr. Martin Colston

SECONDED: Cllr. Billy Drummond

RESOLVED: elect that Councillor Roger Hunneman as Chairperson of the Victoria Park sub committee of the Community Services Committee for the Municipal Year 2019/2020.

Councillor took the Chair for the remainder of the Committee meeting.

PROPOSED: Cllr. Roger Hunneman

SECONDED: Cllr. Martin Colston

RESOLVED: That Councillor Jon Gage be elected as Vice-Chairperson of the Victoria Park sub committee of the Community Services Committee for the Municipal Year 2019/2020.

2. Elect Standing Members

The following Members were elected:

Members: Steve Master, Billy Drummond, Jon Gage, Martin Colston, Roger Hunneman, Jeff Beck, Sarah Slack & Nigel Foot

Substitutes: Olivia Lewis, Martha Vickers, David Cant

3. Apologies for Absence

Councillors Lewis, O-Keefe, Cant

4. DECLARATIONS OF INTEREST AND DISPENSATIONS

The Community Services Manager declared that Councillors Jeff Beck & Billy Drummond, are also Members of West Berkshire Council, which is declared as a general interest on their behalf and a dispensation is in place to allow them to partake in discussions relating to West Berkshire Council business.

5. Terms of Reference

PROPOSED: Cllr. Jeff Beck

SECONDED: Cllr. Jon Gage

RESOLVED: That the Terms of Reference were agreed as being appropriate for this sub committee

6. COMMUNITY SERVICES MANAGERS REPORT

The Community Services Manager's Report was noted.

Community Services Committee had

RESOLVED: To 'de-couple' the changing rooms and the community café and treat them as two separate projects, giving priority to the café and to research the demand for the changing rooms by football teams and the tennis coaches.

The subcommittee went on to discuss:

a) To extend the building by one bay to accommodate a Changing space and a Band Chairs store

Proposed: Cllr Nigel Foot

Seconded: Cllr Billy Drummond

Resolved: To request the Café design by altered to accommodate an additional space for Changing facilities & Band store chairs. Investigate a Toilet, which can be accessed from inside the Café area.

b) BREEAM – to what extent should this building accommodate the BREEAM Standard and the use of renewable technology

The Community Services Manager set out the BREEAM accreditation process:

BREEAM assessment evaluates the procurement, design, construction and operation of a development against a range of targets based on performance benchmarks.

It focuses on sustainable value across range of categories:

- Energy
- Land use and ecology
- Water
- Health and wellbeing
- Pollution
- Transport
- Materials
- Waste
- Management

Each category focusses on the most influential factors, including reduced carbon emissions, low impact design, adaption to climate change, ecological value and biodiversity protection.

Independent [licenced assessors](#) carry out an assessment of a scheme and each of the criteria is scored and then multiplied by a weighting.

Two assessment/certification stages are carried out (a design stage assessment which results in an interim certificate, and a post-construction assessment resulting in a final certificate being issued and a rating awarded).

Developments are rated and certified on a scale of Unclassified (<30%), Pass (>30%), Good (>45%), Very Good (>55%), Excellent (>70%) and Outstanding (>85%)

<https://www.breeam.com/NC2018/>

To achieve the required high standards for Public buildings the use of renewably technology will be necessary, potentially air source heat pumps, low energy lighting, heat recovery and solar technology. There being no gas supply in Victoria Park, all heating hot water & lighting will be electrically powered.

The BREEAM assessor will specify the required technologies to achieve the pass mark required.

Proposed: Cllr. Nigel Foot

Seconded: Cllr. Jeff Beck

Resolved: That the new Café facility should be designed to seek to attain BREEAM Excellent as a minimum standard.

c) Use of an external Agent to seek a suitable Café Operator. Cllr Gage set out the experiences with the Greenham Tower café and some of the pitfalls to be avoided Members asked for external links to similar facilities to be circulated

<https://www.southampton.gov.uk/people-places/parks-open-spaces/hawthorns/the-cafe-hawthorns.aspx>

<https://www.bracknell-forest.gov.uk/leisure-services/look-out/facilities>

<https://www.facebook.com/woodpeckercafeQP>

Proposed: Cllr. Martin Colston

Seconded: Cllr Billy Drummond

Resolved: that Newbury Town Council should engage with a suitable Commercial Agent to assist in finding a suitable commercially orientated Tenant for the Café Operation.

d) discussion took place in respect of the use of the area set aside for the full size football pitch. View expressed were that this is a valuable area for picnic, casual play and regularly used lunchtimes for impromptu games. Investigations should be made into liability for its future use.

Proposed: Cllr Nigel Foot

Seconded: Cllr Jeff Back

Resolved: The area currently set aside for a football pitch should be retained as open play area for casual use by the public and the use monitored for future discussion

THERE BEING NO OTHER BUSINESS THE CHAIRPERSON THANKED ALL THOSE IN ATTENDANCE AND DECLARED THE MEETING CLOSED AT 9pm.

CHAIRPERSON

Newbury Town Council**Public Report****Victoria Park sub Committee of the Community Services Committee,****Agenda Item No 7****Friends of Victoria Park**

To consider the funding support to the Friends of Victoria Park Group.

Background:

The Friends of Victoria Park Group support the management of Victoria Park by offering their services to manage & maintain the Rose beds adjacent to the Bowls Club in the Park.

The Friends have asked for some financial assistance to provide material to support their activity. In particular one major cost would be:

Harkness Roses suggested using Sulphur Rose to treat the black spot. They find it effective and if you spray the soil as well it helps reduce the spread of the spores.

1kg which it says will treat approx. 80 roses for a year, for approx. £40.

The treatment would require approx. 3kg and probably a bit extra to treat the soil.

This would go a long way to maintain healthier looking bushes for longer.

It will only work if we commit to doing it continuously throughout this and future years.

Objective

To seek approval for the expenditure of a sum not to exceed £250 in support of work being carried out by the Friends Group.

Outcome:

To support the volunteer Group managing the Rose beds in Victoria Park of the benefit of all.

Options

Instruct the Grounds Maintenance Contractor to carry out this work at a costs.

Do nothing

Finance:

The funding is available via the Newbury in Bloom allocation

Reference to Council Strategy, where relevant

The Council Strategy includes the following objectives:

01.12 Provide brochures maps signage and other information for the benefit of visitors to Newbury

02.20 Promote the heritage & conservation of Newbury and its appreciation to the Public & promote events & activities that recognise, highlight and protect the town's heritage and history.

Recommendation(s)

To approve the allocation of a sum not to exceed £250 to support the Friends of Victoria Park in their works to maintain the rose beds.

Signed: David Ingram
Community Services Manager

5th August 2019

Newbury Town Council**Public Report****Victoria Park sub Committee of the Community Services Committee,****Agenda Item No 6****Lottie Dod (1871-1960)**

To consider the erection of a memorial plaque within the new Café building in Victoria Park

Background:

Charlotte (Lottie) Dod was an outstanding female British sportswoman of the pre-First World War era, and one of the most versatile of all time. She was born in Cheshire, the daughter of a wealthy Liverpool cotton broker. She initially excelled at tennis, winning the Wimbledon ladies championship in 1887, 1888, 1891, 1892, and 1893.

Proceeding to other sports, in 1904 she won the British Ladies Amateur Golf Championship and played twice for the England women's national hockey team, which she helped to found.

In 1905 she and her brothers moved to Edgecombe, Andover Road, Newbury (now the site of Woodridge House) and lived there until 1913, when they moved to Devon.

While in Newbury she joined the Welford Park Archers, and won the women's silver medal in archery at the 1908 Summer Olympics. Other sports which she mastered were the Cresta Run, skating, rowing, sculling, horse-riding, mountaineering, and billiards.



Objective

To seek approval on behalf of the Heritage Working Group for the erection of a memorial plaque within the new Café building in Victoria Park.

Outcome:

To commemorate people and events that enhance the reputation of Newbury and to promote tourism

Options

Investigate the potential for an alternative location within Victoria Park to erect this Heritage plaque.

Finance:

The provision of the Plaque would be funded by the Heritage Working Group.

Reference to Council Strategy, where relevant

The Council Strategy includes the following objectives:

01.12 Provide brochures maps signage and other information for the benefit of visitors to Newbury

02.20 Promote the heritage & conservation of Newbury and its appreciation to the Public & promote events & activities that recognise, highlight and protect the towns heritage and history.

Recommendation(s)

To approve the Blue Plaque celebrating the sporting achievements of Lottie Dod should be incorporated in the Café Building

Signed: David Ingram
Community Services Manager

5th Aug 2019

Newbury Town Council**Public Report****Victoria Park sub Committee of the Community Services Committee,****Agenda Item No 8****Sensory Garden**

To consider the inclusion of the Sensory Garden project within the Café development project

Background:

The Sensory Garden project came to Community Services Committee for consideration in June 2018.

The Victoria Park and Newbury in Bloom Working Groups were keen to develop the open space between Victoria and Her Lions and the tennis courts by constructing a sensory garden for visitors to the Park to strive to maximise the sensory impact the garden has on its visitors. It was to include plants and other things that entice the senses and attract wildlife.

The stated aim was:

The Sensory Garden will provide an area for interactive sense stimulation identified to help adults and children with learning difficulties and will evoke emotion and memory for Alzheimer's sufferers and elderly visitors. It will also provide a space for members of the public to take a break from the daily hustle and bustle of town life and work.

The gardens will incorporate interactive art features including a sound wood sculpture, a mosaic designed by local school children flowing through the footpaths and the relocation of the Symphony of the Trees sculpture. The Garden is situated in front of the sculpture of Queen Victoria and her Lions, helping to provide a picturesque back drop to one of Newbury's most iconic statues.

Areas of banked planting, wheelchair accessible edible planting beds, a willow tunnel, bubbling solar powered water bowls, traditional hedge laid Hazel and Hornbeam, sensory planting and seating areas will all be features of the gardens.

The Sensory Garden has been designed and steered with the support of the Newbury in Bloom working group, Victoria Park working group and The Friends of Victoria Park in a joint venture. With the finished Design being produced by Fran Lawton, a local garden designer and NIB working group member. All of the Sensory sculptures and mosaics are to be produced by local artists.

After the garden open, the area will be cared for by the Friends of Victoria Park a volunteer led group helping to make the park a more enjoyable place to visit. The Friends of Victoria Park currently care for areas of horticultural importance in the park such as the Community Rose Beds and the Bowls Club Cottage garden bed.

At that time the Council agreed to allocate some funding:

The Council currently have £13,151.00 unspent S106 funds. These funds would help towards developing the Sensory Garden in advance of the 2019 Britain in Bloom competition, providing a facility that could be used by visitors of all ages and abilities to the Park.

It is recommended that the Council approves to allocate S106 funds to support the venture.

The total cost for this project is (updated) approx. £38,000. The balance funding was to be sought from sponsorship & Grants, regrettably this did not materialise.

Objective

To seek approval to include the Sensory Garden project within the overall Landscape scheme of the new Café building in Victoria Park to seek economies of scale in costs

.

Outcome:

To provide an additional facility within the Park for disadvantaged groups offering sensory impact for health, rest and enjoyment.

Options

Continue as a standalone project

Do nothing

Finance:

The provision of the previously allocated funding to be added to the Café project allocation and any shortfall to be sought from alternative sources

Reference to Council Strategy, where relevant

The Council Strategy includes the following objectives:

01.6 - Maintain and run high quality parks, playground and leisure spaces/facilities

01.STP7 - Develop a Sensory Garden in Victoria Park

01.MTP4 - Maintain Victoria Park as a first class amenity and recreational area for the benefit of all the citizens of Newbury and achieve the Green Flag Award for Victoria Park

02.15- Promote Newbury, participate in Britain in Bloom to raise civic pride and encourage and acknowledge efforts by the community, businesses and other organisations in Newbury

Recommendation(s)

To approve the inclusion of the Sensory Garden project within the overall Landscape scheme of the new Café building in Victoria Park to seek economies of scale in costs.

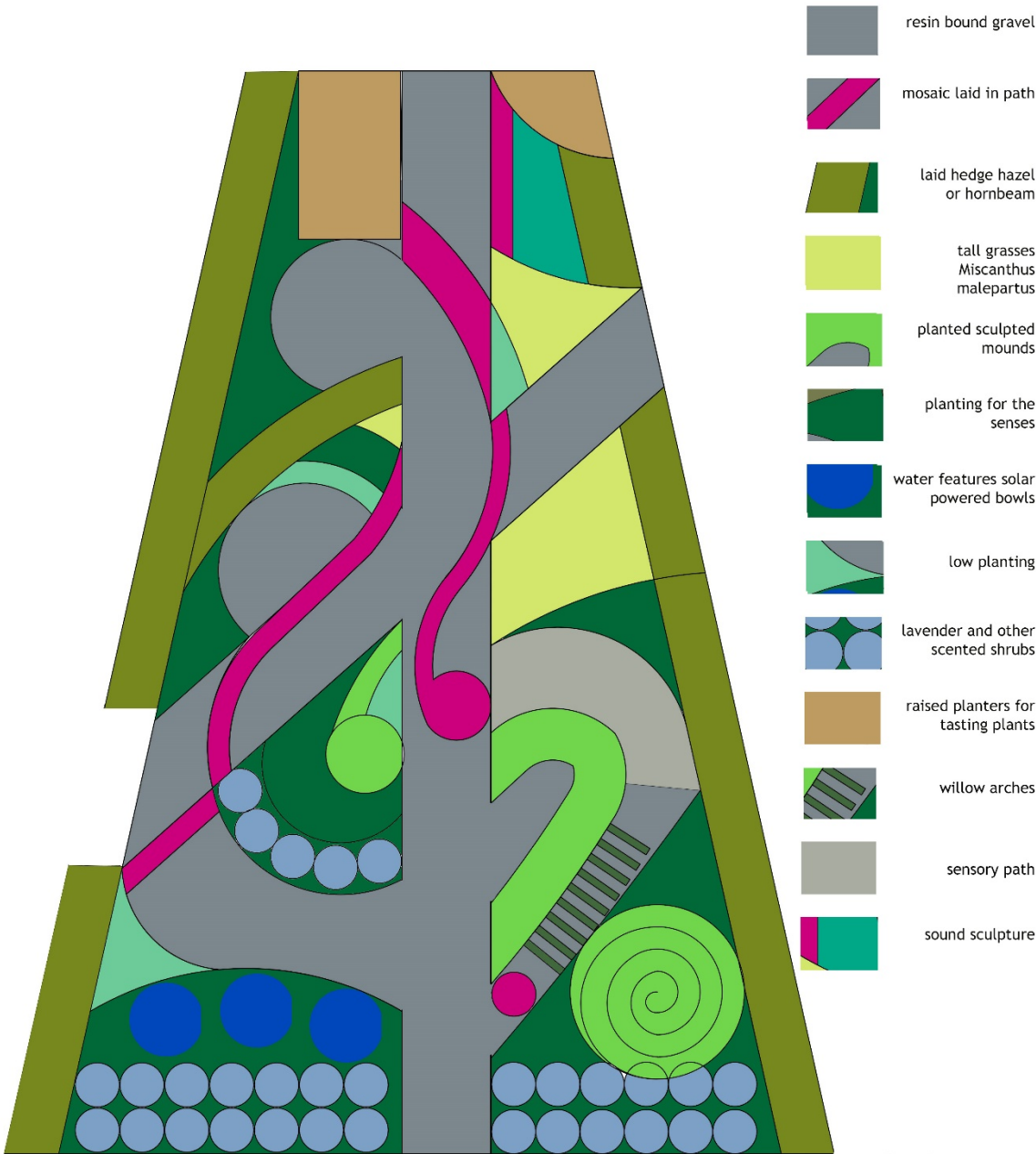
Signed: David Ingram
Community Services Manager

5th August 2019

Victoria Park Sensory Garden Master Plan

MASTER PLAN FOR VICTORIA PARK NEWBURY

KEY



PROJECT:SENSORY
GARDEN VICTORIA
PARK
MASTERPLAN

9TH JAN 2018
LOTUS DESIGN
07712 204327



Introduction and background

Victoria Park Sensory Garden is designed to provide a sanctuary within the confines of Newbury's Victoria Park for people to sit, relax and provide an inclusive area for all to enjoy.

The Sensory Garden will provide an area for interactive sense stimulation identified to help adults and children with learning difficulties and will evoke emotion and memory for Alzheimer's sufferers and elderly visitors. It will also provide a space for members of the public to take a break from the daily hustle and bustle of town life and work.

The gardens will incorporate interactive art features including a sound wood sculpture, a mosaic designed by local school children flowing through the footpaths and the relocation of the Symphony of the Trees sculpture. The Garden is situated in front of the sculpture of Queen Victoria and her Lions, helping to provide a picturesque back drop to one of Newbury's most iconic statues.

Areas of banked planting, wheelchair accessible edible planting beds, a willow tunnel, bubbling solar powered water bowls, traditional hedgelayed Hazel and hornbeam, sensory planting and seating areas will all be features of the gardens.

The Sensory Garden has been designed and steered with the support of the Newbury in Bloom working group, Victoria Park working group and The Friends of Victoria Park in a joint venture. With the finished Design being produced by Fran Lawton, a local garden designer and NIB working group member. All of the Sensory sculptures and mosaics are to be produced by local artists.

After the garden open, the care of the area will be assisted by the Friends of Victoria Park alongside the councils contractors, the Friends of Victoria Park are a volunteer led group helping to make the park a more enjoyable place to visit, they currently care for areas of horticultural importance in the park such as the Community Rose Beds and the Bowls Club cottage garden bed.

The Sensory Garden will assist in Newbury's application into Britain in Bloom in the coming years, incorporating community involvement and providing a different amenity within Newbury's most prominent open space.

Commencement of the project is currently reliant on sourcing funds from either corporate funding or through the good exchange match funding the amount already allocated by Newbury Town Council to commence the project.

Commencement of works

If the goal is achieved of securing the funding by January the vast body of the works will be completed by the end of June including all pathways, art installations and major groundworks completed. This may change to August if the changing rooms and new café are under construction as this is scheduled in for May/June next year and would have an impact on the area including potentially using some of the Sensory garden site as a compound.

The rest of the works would then be completed via volunteer days from the end of the initial works through till February 2020.

Volunteer involvement is vital to this project to keep it within or close to budget and also to fulfil the need for community involvement for our bids in Thames and Chiltern in Bloom and for Green flag status within the park.

The sensory garden can be split into 4 different elements –

Implementation

This will take the first 3 months and will involve organising site coordination of contractors, ordering materials, Site visits, commissioning of the sound sculpture and for the Mosaic artist to go out to schools to design the mosaic.

Base Works

This will happen in month 4 in which the site will be secured, the sub-base for the paths will be put down, concrete pads for the symphony of the trees and the benches will be laid.

Site dressing

This will happen in month 5 in which the Tiger Mulch will be laid, the benches, raised planter and sculptures will be installed and the mosaic will be laid with school trips to help the artist.

Volunteer element

Between months 6-14 monthly volunteer days suitable to the time of year will be held in this order to –

- Build raised mounds
- Produce bedding areas for planting
- Hedge Plant
- Build the Willow Tunnel
- Plant all the areas within the site

A Gant chart is provided to show the flow of the project.

We will hope to have the project completed by March 2020 other than hedgelaying that will have to be under taken 2 years after planting in the autumn of 2021.

Newbury Town Council**Public Report**

Victoria Park sub Committee of the Community Services Committee,

Agenda Item No 9**Queen Victoria & the Lions**

To consider the erection of a memorial plaque within the new Café building in Victoria Park

Background:

Queen Victoria & the Lions were originally part of an ornate Fountain build to commemorate Queen Victoria and still in the Market Place.

Queen Victoria & the Lions were purpose commissioned terracotta monuments.

The statue was unveiled at a lively ceremony in the Market Place on 24 June 1903



To facilitate better traffic movement the plinth was demolished and the Statues moved first to Greenham House, 2 Lions put in storage, these then moved to Beale Park

In 1966 2 Lions & Victoria were moved to the current location in placed in Victoria Park to be followed in 2002 by the remaining 2 Lions.

These statues are now beginning to show signs of decay and consideration should be given to their future status.

Objective

To seek approval on behalf of the Heritage Working Group for the erection of a memorial plaque within the new Café building in Victoria Park.

Outcome:

To consider the future preservation of these monuments for the benefit of the people of Newbury& as a feature to promote tourism

Options

Do nothing

To consider the 2 options for which quotes have been obtained:

1. To carry out a Conservation survey by a recognised Conservation specialists to obtain a Report on options & costs for refurbishment & preservation. The cost for this has been estimated at £2,200
2. To carry out cleaning & cosmetic refurbishment of the damaged terracotta areas, repoint to arrest current speed of decay – this has been estimated based on photographic evidence only by a Specialist Restoration Company as being in the order of £21,000

Finance:

The provision for any works to these monuments would require budgeting for 2020/21 and beyond

Reference to Council Strategy, where relevant

The Council Strategy includes the following objectives:

01.12 Provide brochures maps signage and other information for the benefit of visitors to Newbury

02.20 Promote the heritage & conservation of Newbury and its appreciation to the Public & promote events & activities that recognise, highlight and protect the town's heritage and history.

Recommendation(s)

To recommend to Policy & Resources Committee a budget provision for 2020/21 and beyond for investigations & remedial works to these monuments.

Signed: David Ingram
Community Services Manager

5th August 2019

